

# Clankke®

## air



## RECHARGEABLE INFLATOR

MODEL NO: RI150LI

PART NO: 7640291

## OPERATION & MAINTENANCE INSTRUCTIONS

UK  
CA | CE



ORIGINAL INSTRUCTIONS

GC10/22

---

## INTRODUCTION

---

Thank you for purchasing this CLARKE Tyre Inflator. The RI150Li can be used for inflating car, motorcycle and bicycle tyres, inflatable sports balls and other inflatables. The compressor is not waterproof and should not be used in any wet applications.

Before attempting to use the product it is essential that you read this manual thoroughly and carefully follow all instructions given. In doing so you will ensure the safety of yourself and that of others around you and you can also look forward to the product giving you long and satisfactory service

---

## PRODUCT SPECIFICATIONS

---

Model	RI150Li
Hose length	150mm
Max working pressure	10.3 Bar/150 psi
Max flow rate	20L/min (zero load)
Ingress protection	IP20
Duty cycle	20-25 mins running
Working temperature	-10 to 45°C
Dimensions (L x W x H)	41 x 62 x 155 mm
Weight	415 g
Charging lead	USB-C
Cable length	320mm
Battery Type	Lithium Ion
Battery capacity	2000mAh/7.4V(14.8Whr)
Charging time	Approx 3-4 hours
Sound output	85dB

---

## GENERAL SAFETY WARNINGS

---



**WARNING: WHEN USING BATTERY POWERED TOOLS, BASIC SAFETY PRECAUTIONS SHOULD ALWAYS BE FOLLOWED TO REDUCE THE RISK OF FIRE OR PERSONAL INJURY. PLEASE READ ALL THE SAFETY AND OPERATING INSTRUCTIONS CAREFULLY BEFORE USING THIS PRODUCT**

---

### PERSONAL SAFETY

1. ALWAYS thoroughly familiarise yourself with this product and its operation and always read the instructions in this manual before using the product.
2. ALWAYS stay alert, watch what you are doing and use common sense when operating the tyre inflator. DO NOT use while you are tired or under the influence of medication, drugs or alcohol. A moment of inattention can result in personal injury.

### WORKING CONDITIONS

1. DO NOT use the tyre inflator in a damp or wet environment. The inflator should only be used with good ventilation. There should be no dust, acids, vapour, explosive or flammable gases in the room.
2. DO NOT cover the tyre inflator. ALWAYS use it with good all-round air ventilation and that the air intake air is dry and dust free.
3. Keep the work area clean and well lit. Floors should always be kept clear. Cluttered or dark areas invite accidents.
4. NEVER operate the tyre inflator in wet or damp locations.
5. NEVER over-reach. Keep your proper footing and balance at all times to enable better control of the tyre inflator in unexpected situations.
6. ALWAYS use in a safe area away from traffic and other hazards.





### GENERAL PRODUCT USE AND CARE

1. NEVER attempt to modify the fittings or attachments in any way. Doing so will invalidate the guarantee and could result in personal injury.
2. NEVER abuse the charging cable. NEVER pull on the cable when removing the plug from the socket or lift the tyre inflator by the power cable.
3. NEVER leave the inflator running while unattended.
4. Take care when using this tyre inflator to inflate small, low-pressure objects such as children's toys or footballs can explode if over-inflated.
5. ALWAYS take care to maintain tyres to vehicle manufacturer's recommended pressures.

6. ALWAYS store the tyre inflator at moderate temperature and out of reach of children.
7. NEVER use this product if it appears defective or is operating abnormally; If the tyre inflator operates unusually or makes strange noises, switch off immediately. Arrange repairs by your CLARKE dealer.
8. NEVER attempt any repairs yourself. If you have a technical problem contact your local CLARKE dealer.
9. NEVER throw the product away with household garbage or allow to fall into a fire.

## SAFETY SYMBOLS

The following safety symbols are shown on the product and/or it's packaging..

	Read this instruction booklet carefully before use	 Li-ion	Lithium-Ion battery supplied to be re-cycled in accordance with regulations.
	Caution-hot surfaces. Do not handle.		Do not immerse battery in water. Harmful to aquatic life.

## ENVIRONMENTAL RECYCLING POLICY

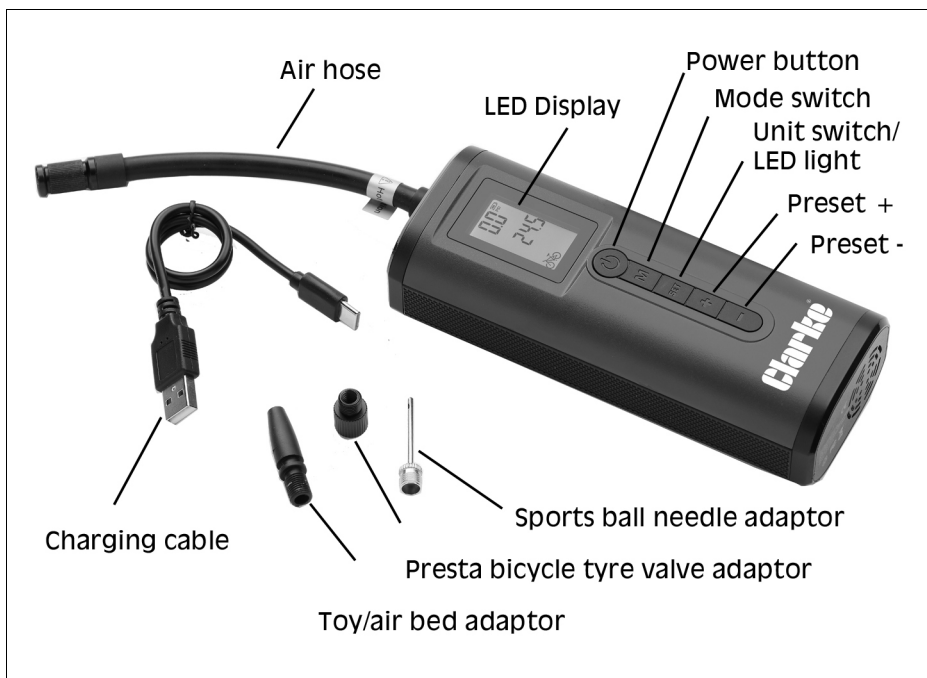


By purchasing this product, the customer is taking on the obligation to comply with current WEEE regulations.

This means that this product must not be disposed of with general household waste. It must be disposed of according to the laws governing Waste Electrical and Electronic Equipment (WEEE) at a recognised disposal facility.

This product contains valuable raw materials. Metal products should be taken to your local civic amenity site for recycling of metal products.

## OVERVIEW



## UNPACKING

After removing the tyre inflator from its packaging, check that it has not been damaged in transit. Report any damage immediately to the CLARKE dealer where the item was purchased.

## ATTACHMENTS

Supplied with the tyre inflator are three adaptors for different uses. These are provided to inflate car tyres, sports balls, air beds, small inflatables and bicycle tyres etc. To avoid over-inflation, always follow manufacturer's instructions for the item to be inflated.

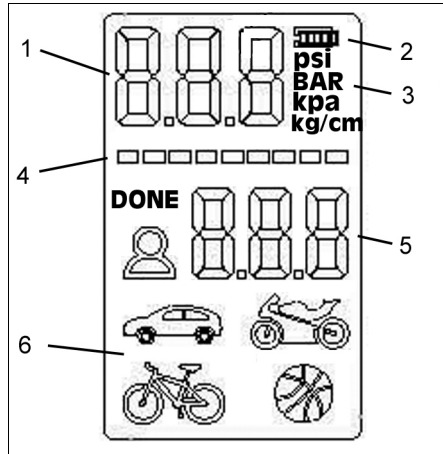
- Air Hose
- Toy/air bed adaptor
- Sports ball needle adaptor
- 'Presta' bicycle tyre valve adaptor
- C type charging cable
- Storage bag

# OPERATION

## THE DISPLAY PANEL

The display panel will illuminate and display the following:

- Measured pressure value (1)
- Battery level (2)
- Unit of measurement (3)
- Progress bar (4)
- Preset pressure value (5)
- Operating mode (6)



## CHARGE AND DISCHARGE MODES

Connect the USB-C cable to an adaptor (not supplied) to charge the device.

- When charging, the battery indicator will flash.
- When fully charged, the battery indicator lights will remain on.
- After 10 seconds of no operation during charging, the display will automatically turn off.

The device must not be used during charging.

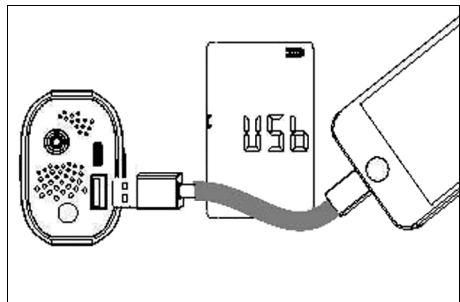
After using a long press to turn the device on, the charging port (4) can supply power to charge other electronic devices via the USB output. (5V/1.5A max). The device will shut down if the battery becomes too low or when the battery is fully charged.

## POWER ON/OFF

Press the Power button (long press) to turn the device on.

Press the Power button (long press of 3 seconds) to turn the device off.






- The progress bar will move across the screen to the point of start-up.
- The USB port can now supply power to charge another electrical device.



- The unit will automatically shut down when the battery becomes low and will stop charging when fully charged.

## SELECTING DIFFERENT MODES

A short press of the mode button can be used for the following different applications.

	Car mode; Default pressure: 35psi	Adjusting range;-0-65 psi
	Motorcycle mode; Default pressure: 40psi	Adjusting range;-0-55 psi
	Bicycle mode; Default pressure: 38psi	Adjusting range;-0-150 psi
	Ball mode; Default pressure: 8psi	Adjusting range;-0-150 psi
	Custom mode; Default pressure: 100psi	Adjusting range;-0-150 psi

## USING THE PUSHBUTTONS

Use a short press of the preset button +/- to adjust the pre-set pressure.

Use a long press of the preset button +/- to rapidly adjust the pre-set pressure value.

Use a long press of the LED light button to turn on/off the LED light.

Use a short press of the power button to actuate the inflation, real time pressure valve changes during inflation.

**NOTE:** The mode and pre-set pressure value will be automatically saved when the machine is turned off and the last pre-set pressure value will be automatically restored for the next use.

## PRESSURE DETECTION AND INFLATION

A short press on the power button will start inflation. A second short press will stop inflation.

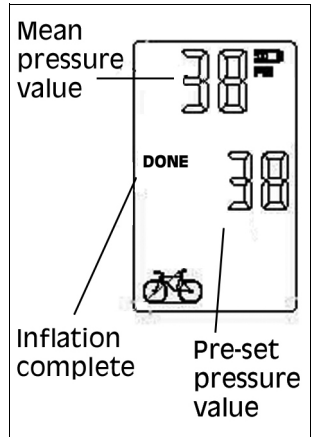
When the pressure reaches the pre-set pressure value the pump will automatically stop. After turning on, connect the hose to the object to be measured. The real-time pressure (12) will show the pressure value.

## PRESSURE CALIBRATION

After turning on, if the displayed pressure value is not 0, press button (+) and (-) simultaneously for 2 seconds to enter the calibration mode. The display will flash quickly, meaning the reset is complete.

Note: The device has been calibrated at the factory but a Reset/calibration can improve accuracy due to variations in air pressure due to altitude.

DO NOT attempt to re-calibrate while connected to inflatable objects.



## COMMON INFLATION PRESSURES

	PSI	KPA	BAR
<b>Car</b>	35 - 50	240 - 350	2.4 - 3.5
<b>Motorcycle</b>	26 - 40	180 - 275	1.8-2.75
<b>Bicycle</b>	35 - 100	240 - 690	2.4-6.9
<b>Ball</b>	3-14	20-100	0.2-1.0

- When inflating tyres with normal “Schrader” valves, no adaptors need to be fitted to the hose.
- Presta valves require the adaptor to be screwed onto the valve before attaching the hose.

Avoid inflating the objects above the recommended inflation pressure. This could lead to damage and /or injuries.

Low pressure products such as balloons/swimming rings/balls are outside the minimum pressure range of the product as the air pressure is very low and the pressure value cannot be pre-set. Use the inflator with caution.



---

## TYRE INFLATION

---

1. Fix the tyre valve connector onto the vehicle tyre valve, ensuring the valve is clean.
  - When connected correctly, the digital display will show the current pressure in the tyre. If this is the correct tyre pressure as stated in your vehicle handbook, remove the valve connector.
2. If the tyre is below the recommended pressure (as specified in your vehicle handbook), press either the '-' or '+' pre-set button to adjust the pre-set value on the display to the correct tyre pressure.



**NOTE:** The unit will default to the last tyre pressure set. You can then adjust this using the '-' or '+' buttons.

3. Press the Power button to activate the inflator.
4. The tyre inflator will now inflate your tyre to the pre-set pressure and switch off automatically when the pressure is reached. Towards final inflation, the tyre pressure display reading will be slightly higher than the selected pressure. When the tyre inflator stops, the final reading will be the selected pressure. This is a normal function of the unit.
5. Press the power button to switch OFF the tyre inflator and remove the tyre valve connector from the tyre valve, returning the hose to its storage position.
6. **Take care that the hose has not become hot to the touch when disconnecting.**

---

## CARE & MAINTENANCE

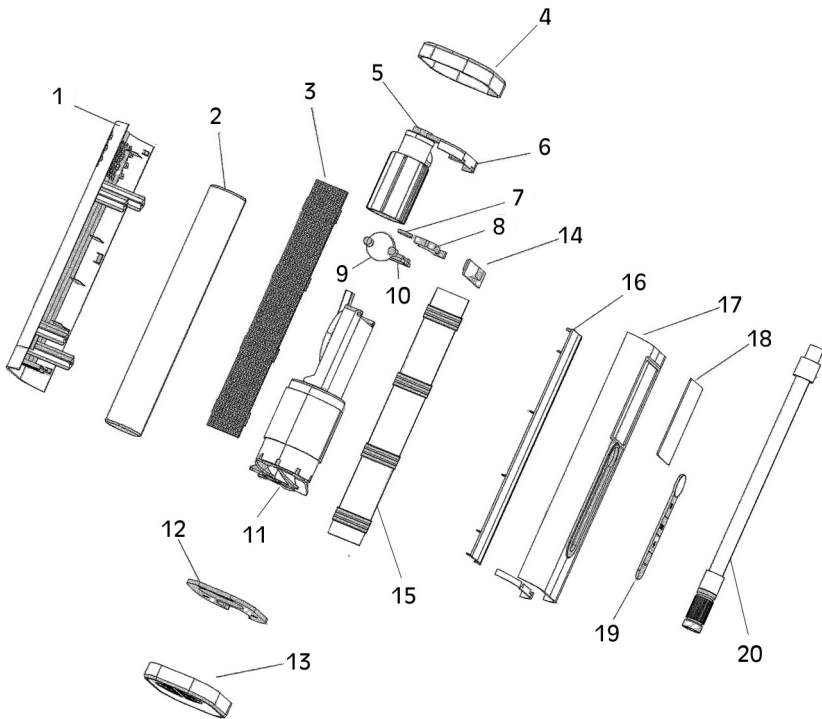
---

Keep the tyre inflator free of dirt and dust as far as possible. Wipe with a clean cloth or blow it down with compressed air at low pressure. DO NOT use cleaning agents or solvents as these may be aggressive to the plastic parts. Ensure that no water can get into the interior of the tyre inflator.

Your tyre inflator has been designed to give long and trouble free service. If, however, having followed the instructions in this booklet carefully, you encounter problems, take the tyre inflator to your local CLARKE dealer.

Store the tyre inflator in a dry location.

# COMPONENT PARTS



No	Description
1	Housing - back
2	Battery
3	Support
4	Housing-top
5	Cylinder
6	Support
7	Sealing ring
8	Silicone pad
9	Pressure-sensitive film
10	Pressure sensor

No	Description
11	Motor
12	Support
13	Housing-bottom
14	Silicone pad
15	Motor support
16	Battery support
17	Housing-front
18	Lens
19	Switch
20	Hose

# DECLARATIONS OF CONFORMITY



**Clarke**<sup>®</sup>  
INTERNATIONAL  
Fitzwilliam Hall, Fitzwilliam Place, Dublin 2

## DECLARATION OF CONFORMITY

This is an important document and should be retained.

We hereby declare that this product(s) complies with the following directive(s):

2014/30/EU Electromagnetic Compatibility Directive  
2011/65/EU Restriction of the Use of Certain Hazardous Substances in Electrical and Electronic Equipment

The following standards have been applied to the product(s):

EN IEC 55014-1:2021, EN IEC 55014-2:2021, EN IEC 61000-3-3:2013+A1:2019+A2:2021,  
EN IEC 61000-3-2:2019+A1:2021, IEC 62321-2:2021, IEC 62321-3-1:2013,  
IEC 62321-4:2013+A1:2017, IEC 62321-5:2013, IEC 62321-6:2015, IEC 62321-7-1:2015,  
IEC 62321-7-2:2017, IEC 62321-8:2017.

The technical documentation required to demonstrate that the product(s) meet(s) the requirement(s) of the aforementioned directive(s) has been compiled and is available for inspection by the relevant enforcement authorities.

The CE mark was first applied in: 2022

Product Description: 7.2V Rechargeable Tyre Inflator  
Model number(s): R1150LI  
Serial / batch Number: N/A  
Date of Issue: 12/10/2022

Signed:

J.A. Clarke  
Director

R1150LI CE Clarke DOC 10/222

Page 1 of 1



**Clarke**<sup>®</sup>  
INTERNATIONAL  
Hermill Street, Epping, Essex CM16 4LG

## DECLARATION OF CONFORMITY

This is an important document and should be retained.

We hereby declare that this product(s) complies with the following statutory requirement(s):

Electromagnetic Compatibility Regulations 2016  
The Restriction of the Use of Certain Hazardous Substances in Electrical and Electronic Equipment Regulations 2012

The following standards have been applied to the product(s):

EN IEC 55014-1:2021, EN IEC 55014-2:2021, EN IEC 61000-3-3:2013+A1:2019+A2:2021,  
EN IEC 61000-3-2:2019+A1:2021, IEC 62321-2:2021, IEC 62321-3-1:2013,  
IEC 62321-4:2013+A1:2017, IEC 62321-5:2013, IEC 62321-6:2015, IEC 62321-7-1:2015,  
IEC 62321-7-2:2017, IEC 62321-8:2017.

The technical documentation required to demonstrate that the product(s) meet(s) the requirement(s) of the aforementioned legislation has been compiled and is available for inspection by the relevant enforcement authorities.

The UKCA mark was first applied in: 2022

Product Description: 7.2V Rechargeable Tyre Inflator  
Model number(s): R1150LI  
Serial / batch Number: N/A  
Date of Issue: 12/10/2022

Signed:

J.A. Clarke  
Director

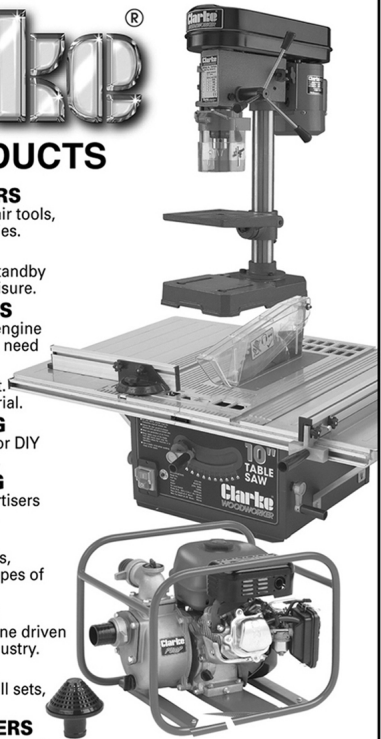
R1150LI UKCA Clarke DOC 10/222

Page 1 of 1

# A SELECTION FROM THE VAST RANGE OF

# Clarke®

## QUALITY PRODUCTS



### **AIR COMPRESSORS**

From DIY to industrial, Plus air tools, spray guns and accessories.

### **GENERATORS**

Prime duty or emergency standby for business, home and leisure.

### **POWER WASHERS**

Hot and cold, electric and engine driven - we have what you need

### **WELDERS**

Mig, Arc, Tig and Spot.  
From DIY to auto/industrial.

### **METALWORKING**

Drills, grinders and saws for DIY and professional use.

### **WOODWORKING**

Saws, sanders, lathes, mortisers and dust extraction.

### **HYDRAULICS**

Cranes, body repair kits, transmission jacks for all types of workshop use.

### **WATER PUMPS**

Submersible, electric and engine driven for DIY, agriculture and industry.

### **POWER TOOLS**

Angle grinders, cordless drill sets, saws and sanders.

### **STARTERS/CHARGERS**

All sizes for car and commercial use.

## Guarantee

This product is guaranteed against faulty manufacture for a period of 12 months from the date of purchase. Please keep your receipt which will be required as proof of purchase.

This guarantee is invalid if the product is found to have been abused or tampered with in any way, or not used for the purpose for which it was intended. Faulty goods should be returned to their place of purchase, no product can be returned without prior permission.

This guarantee does not affect your statutory rights.

**PARTS & SERVICE: 020 8988 7400**

**E-mail: [Parts@clarkeinternational.com](mailto:Parts@clarkeinternational.com) or [Service@clarkeinternational.com](mailto:Service@clarkeinternational.com)**

**SALES: UK 01992 565333 or Export 00 44 (0)1992 565335**

**Clarke®** INTERNATIONAL Hemnall Street, Epping, Essex CM16 4LG  
[www.clarkeinternational.com](http://www.clarkeinternational.com)